

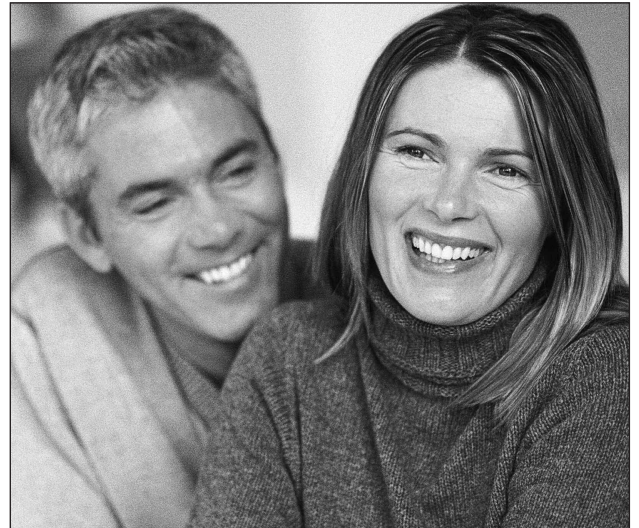
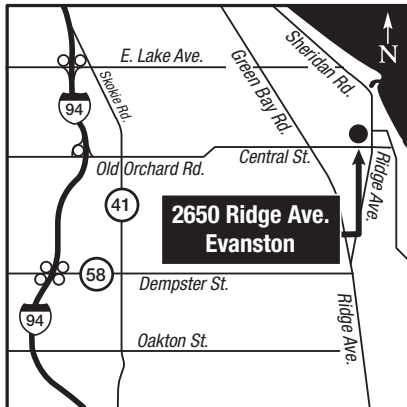
The Doreen E. Chapman Center
Evanston Hospital
2650 Ridge Avenue
Evanston, IL 60201

The Doreen E. Chapman Center

Contact The Doreen E. Chapman Center (847) 570-3100 between 8:15 a.m. and 4:45 p.m., Monday-Friday. A staff member will be available to take your call and to answer your questions.

Chemical Dependency Services

Contact The Access Center (847) 570-2500 to schedule a first appointment with The Doreen E. Chapman Center.



NorthShore
University Health System

- Hospitals: Evanston, Glenbrook, Highland Park, Skokie
- Medical Group
- Foundation
- Research Institute

NorthShore
University Health System

Evanston Hospital

The Doreen E. Chapman Center Approach

The Doreen E. Chapman Center, located at Evanston Hospital, provides chemical dependency services to adults 18 years of age and older and their families.

The Chapman Center also offers effective, coordinated services to individuals who have an addiction and a co-occurring psychiatric illness or chronic pain. At the Chapman Center individuals find professional, compassionate help.

Staffed with a multidisciplinary team including a board certified physician specializing in addiction psychiatry, The Chapman Center focuses on all aspects of the disease to provide a holistic and comprehensive treatment approach.

Services may include one or more of the following:

- Diagnostic assessment
- Coordination of medically monitored detoxification from substances on a NorthShore inpatient medical unit for those individuals who meet criteria
- Outpatient detoxification in conjunction with the partial hospitalization (day) program for those individuals who meet criteria
- Partial Hospitalization (Day Program)
- Intensive outpatient treatment
- Outpatient Services
- Family programming
- Continuing Care relapse prevention group



What happens when I contact the Chapman Center?

When you contact the Center, you will speak with a member of the clinical staff, who can arrange an appointment.

A member of the clinical staff completes a comprehensive biopsychosocial chemical dependency assessment during the first appointment. Family members or friends are encouraged, with the client's consent, to participate in this initial assessment session. The assessment guides treatment recommendations which may include inpatient detoxification on a medical floor, outpatient detoxification, partial hospitalization, intensive outpatient or outpatient services.

The Doreen E. Chapman Center

The Chapman Center is staffed by a team of specialists consisting of physicians, nurses, counselors, recreational therapists and social workers with specialized training in addictions.

NorthShore University HealthSystem (NorthShore), consistently ranked among the top hospitals in the nation, is an academic health care system providing a full continuum of services.

Payment for services can be made through managed care plans and third party insurers. Arrangements for self-pay can be made with one of our financial counselors. When financial assistance is needed, sliding-scale fees may be available for those living in the communities served by NorthShore. The ability to provide sliding scale fees is made possible by a generous donation from the Chapman family.